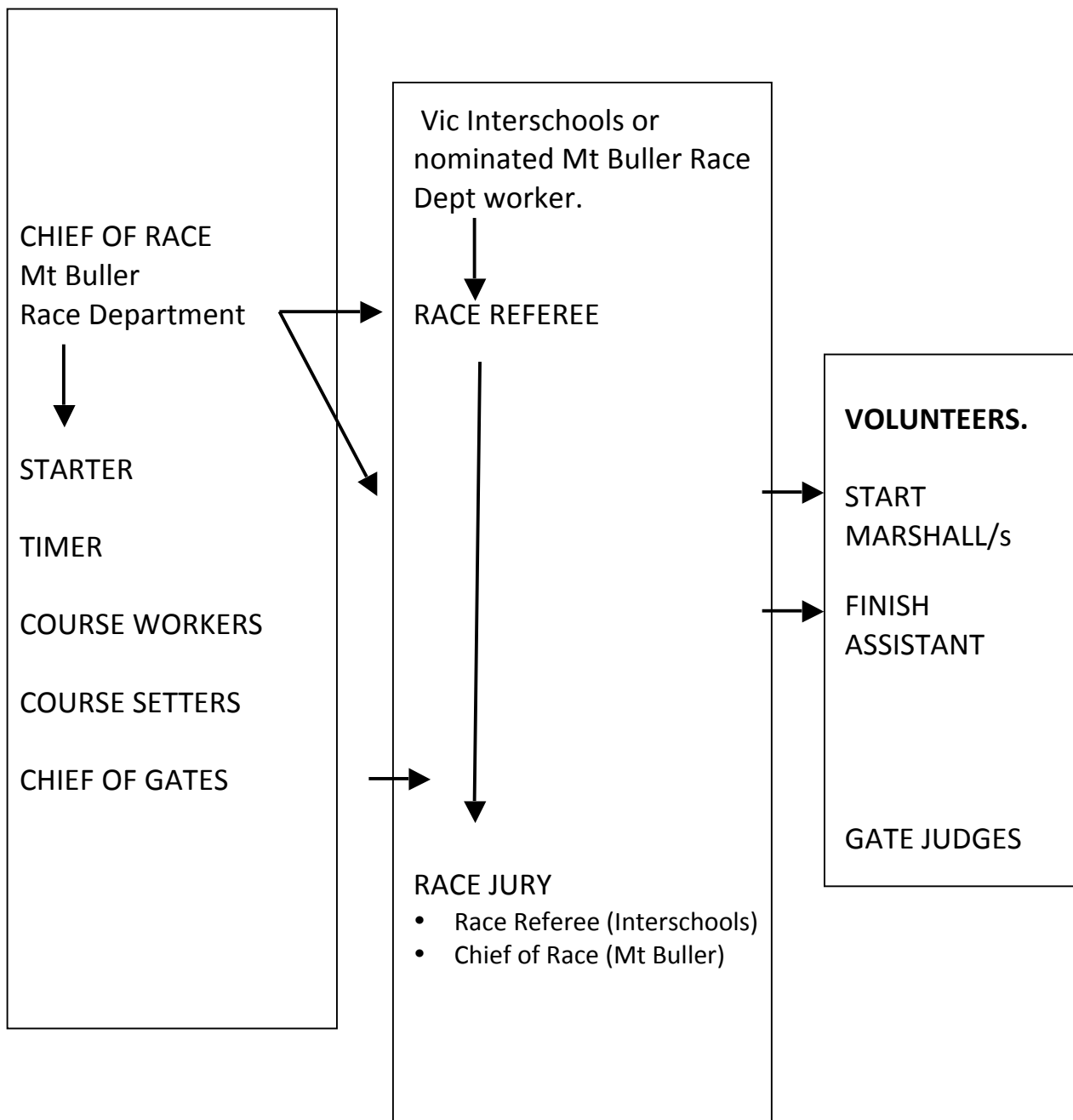


Victorian Interschools Snowsports Course Officials Guidelines



Race Referee

An experienced race official appointed by Mt Buller Race Department or Victorian Interschools .

The Race Referee is responsible for the following activities on Race Day:

- Ensure each official is wearing his or her correct identification and all equipment is working.
- Inspect the course with Chief of Race before the event.
- Liaise with the Chief of Gates and make appropriate decisions if problems occur on a particular gate/area.
- Inspect problem gates and disqualifications (DQs).
- Inspect the skiing/riding surface when necessary. Approve the cessation of racing in consultation with the Chief of Race and/or other jury members should circumstances so dictate.
- Adjudicate on re-runs.
- Convene Jury members as required.
- Verify and sign off all DQs ensuring a diagram accompanies every fault or disqualification. Make sure the DQs are taken to the timer at the bottom of the course promptly.

Start Referee

The responsibilities of the Start Referee are to:

- Make a note of bib numbers which Do Not Start (DNS).
- Record bib order of racers as they start.
- Record re runs
- Be available for Race Jury if required.

Start Marshall

The Start Marshall is responsible for:

- Calling competitors to line-up in bib order. Competitors who arrive out of numerical sequence are to be placed at the end of their gender in their division, except any re runs, who should start as soon as possible.
- The control of excess personnel in the start area such as coaches, team managers, parents.
- Ensuring that competitors race bibs can be read by course officials, helmets are secure, goggles are on and ski boot buckles are clipped up, and the competitors wear satisfactory protective clothing. No exposed skin is allowed due to safety reasons.
- If possible, check that the names on the start list you are provided correspond with the race bib numbers.

Finish Referee

The responsibilities of the Finish Referee are to:

- Record competitor bib numbers as they Finish.
- Note competitors bib numbers who do not Finish (DNF).
- Keep spectators, coaches, team managers, media and sponsors away from the run-out zone of the Finish area.
- Control the safety of competitors finishing the course, slowing them down in the Finish Area if necessary.
- Record the DQs after each run as reported by the Chief of Gates
- Be available for the Race Jury if required.

Finish Assistant

The responsibilities of the Finish Assistant are to:

- Assist the Finish Referee in recording competitors bib numbers as they Finish and those who do not Finish (DNF).
- Keep spectators, coaches, team managers, media and sponsors away from the run-out zone of the Finish area.
- Control the safety of competitors finishing the course, slowing them down in the Finish Area if necessary.
- Once confirmed by the Finish, communicate to competitors if a re run is required.

Chief of Gates

Co-ordinator of the Gate Judges, who:

- Must attend briefings of race officials & know what is expected of gate judges
- Meet the Gate judges on top of the course and place them at a safe position on the course.
- Inform Gate Judges of their responsibilities and what gates they are judging.
- Continually monitor Gate Judges during the event
- Help to keep spectators off the course
- Collect the gate judge DQs at the end of each run, checking the history of any DQs and ensuring the diagrams of all DQs are clear
- Is available for Race Jury if required.

Gate Judge

Gate Judges are responsible for:

1. Check into the Race Office to receive their Course Officials equipment to allow yourself time to be on course 15 minutes prior to the scheduled course inspection.
2. Meet the Chief of Gates at the top of the course ready to be placed on course.
3. Prepare your gate judge sheet in advance including sample diagrams.
4. Observe and determine that each competitor has passed correctly and properly, record legal or fault passages of your assigned gates on the sheet provided. For all faults, draw a clear diagram of the competitor's path.
5. Personally review each fault with the Chief of Gates.
6. Observe and record any interference in your gate area (the competitor must then immediately leave the course in order to request a valid re-run).
7. Reply promptly, properly and clearly ("Back", "Go") to a competitor when asked.
8. Do not help competitors (get their skis for them, help them back into their skis, etc) if they have fallen at your gates. They must complete the run without assistance or else they will be disqualified. In cases that they look like they will not finish the run (injured, need ski patrol, etc) you may help them get to the side of the course but they will then record a DNF and must not finish.
9. Do not discuss faults with coaches, competitors or spectators, during or after the event.

Legal Passage Through Gates

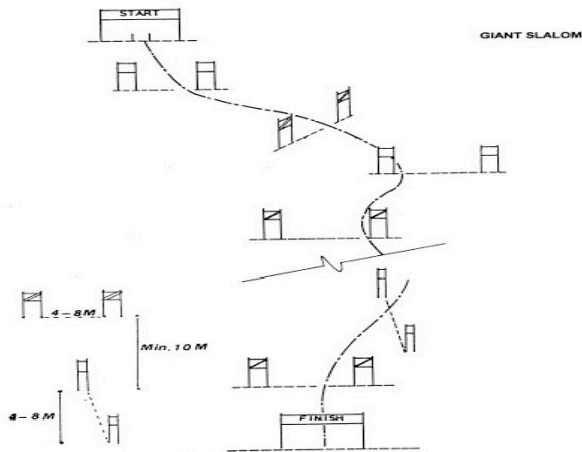
At each gate a competitors skis (both feet)/board must pass through THE GATE LINE (the imaginary line joining the bases of the inside poles. The competitor may cross this line from any direction and may also go into or out of the gate, in a "U" fashion, provided the line is crossed.

If a competitor misses a gate and walks back both boot and ski tips need to cross the imaginary line. As long as ski tips/board and both feet cross the imaginary line, the competitor is OK, even though:

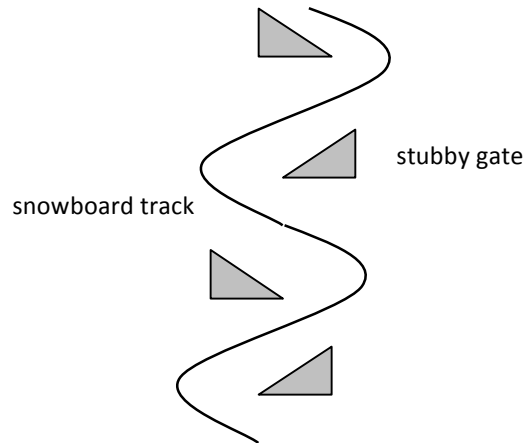
- Competitor knocks down one or all poles of a gate.
- Competitor slides through the gate on some part of body other than the feet.
- Competitor enters and exits from the same side.
- Competitor passes through gates out of their numerical order.

Examples of Passages Through Gates

Alpine Course

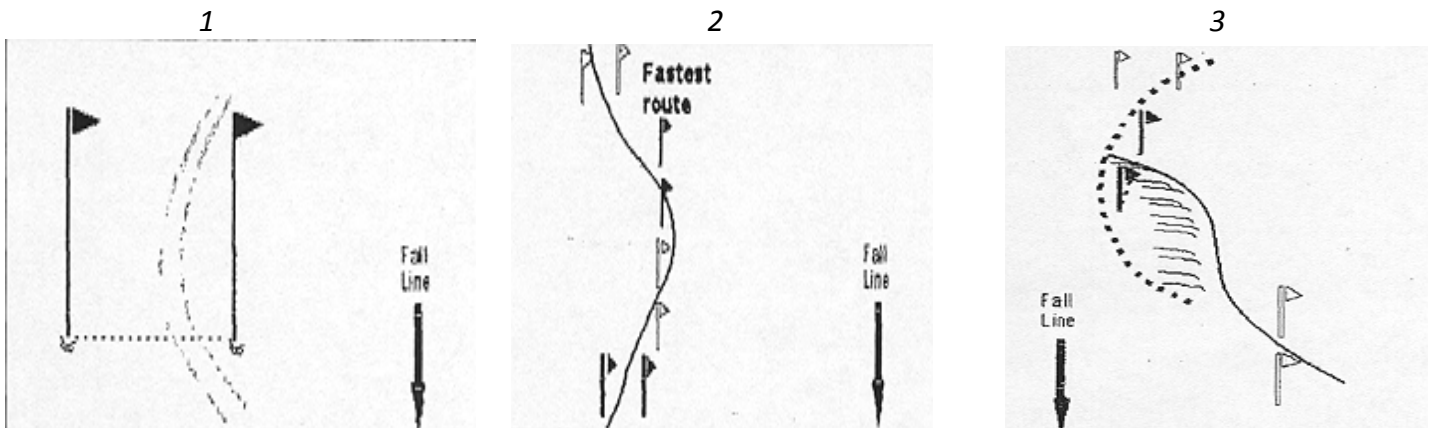


Snowboard Course



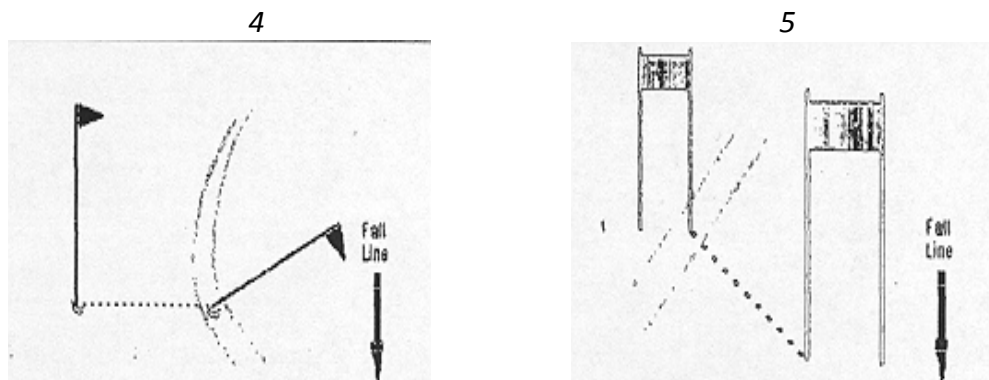
Both feet and the snowboard must go around the stubby gate (the lowest point of the snowboard triangle gate)

Correct Passage Through Gates



Competitor climbed back to go through the course

Incorrect Passage



Competitor 'straddled' gate (illegal). Gate Judge should check tracks and make a good diagram showing track of each foot separately.

Other Disqualifications

Gate judges should watch for and report faults for reasons other than gate passage:

- Competitors must not receive outside assistance. Do not help competitors (get their skis for them, help them back into their skis, etc) if they have fallen at your gates. They must complete the run without assistance or else they will be disqualified. In cases that they look like they will not finish the run (injured, need ski patrol, etc) you may help them get to the side of the course but they will then record a DNF and must not finish.
- Does not wear helmet and/or a race bib correctly and visibly
- Competitor behaves in unsportsmanlike manner.
- Loses one or both skis and is unable to replace them within ten seconds, or if he/she comes to a complete stop for over ten seconds during the run, except if a ski is lost in the last gate in which case he/she may complete the race on one or neither skis without disqualification.
- Competitors must respect the rules for Course Inspection including wearing a helmet, the bib in the proper fashion, and not skiing/riding through gates on the course.

Responses to Competitors

The only communication a gatekeeper may have with competitors is when the competitor is in doubt about correct gate passage and asks if the passage was okay.

Acceptable replies:

Back if the gate has been missed, or

Go if the gate in question has been correctly passed.

The gatekeeper must respond quickly, accurately, distinctly and loudly. *Any reasonable doubt?* - rule in favour of the competitor and reply "**Go**".

Re-Runs

When a competitor is hindered while competing by the interference of an official, a spectator, an animal or any other obstruction (eg missing pole), and wants a re-run, they must immediately leave the race track, ski/ride to the bottom within the course fences, find the Finish Referee and request a re-run. They must not finish the race and must not ski / board through the Finish Line. Gate Judges may be approached by competitors in this situation. If a competitor who comes off the course and believes they have been hindered and approaches a Gate Judge, they must instruct the competitor to report to the Finish Referee. If a competitor over-takes another competitor and neither competitor is interfered with or hindered by the other, a re-run will not be awarded.

If a Competitor Falls at your Gates

In the situation that a competitor falls at your gates, you must let them get up themselves and collect any equipment that has been lost. If you assist them in any way, they will receive a disqualification. You are allowed to encourage them to get up and get racing again and advise them they have missed a gate or where their lost equipment is on course.

If it looks like the fallen competitor is injured, ask them if they wish to continue. If they do wish to continue, do not assist them in getting any lost equipment back on. If they do not wish to continue, you are then allowed to go onto the course to help them off the course and collect any lost equipment.

In some situations, a competitor falls when there is another competitor on course following them. In this case, the fallen competitor must move out of the way of the following competitor, if possible. Gate Judges may instruct the fallen competitor that a competitor is on course and ask them to move out of the way, if possible. When the following competitor reaches the fallen competitor, they are allowed to either; pull off the course, do not finish the course and approach the Finish Referee for a re run OR ski/ride around the fallen competitor and finish the course. Do not instruct the following competitor what to do, unless asked.

Fallen competitors are allowed to finish the course if other competitors have overtaken them when it is safe to do so.

Device use

So that Gate Keepers are aware of what is happening, we ask that while you are on duty, please limit your use mobile phone and music/radio devices. Please also do not film competitors via mobile phones or video cameras.

Gate Judge Sheet

Each Gate Judge is issued with a scorecard for completion during the event.

Gate Judges should prepare their scorecards in advance:

- a) Date, event, division, boys, girls, etc
- b) Numbers of the gates assigned.
- c) Name of gate judge; relief and/or assistant's name
- d) Sample diagrams of assigned gates drawn in advance to document faults.